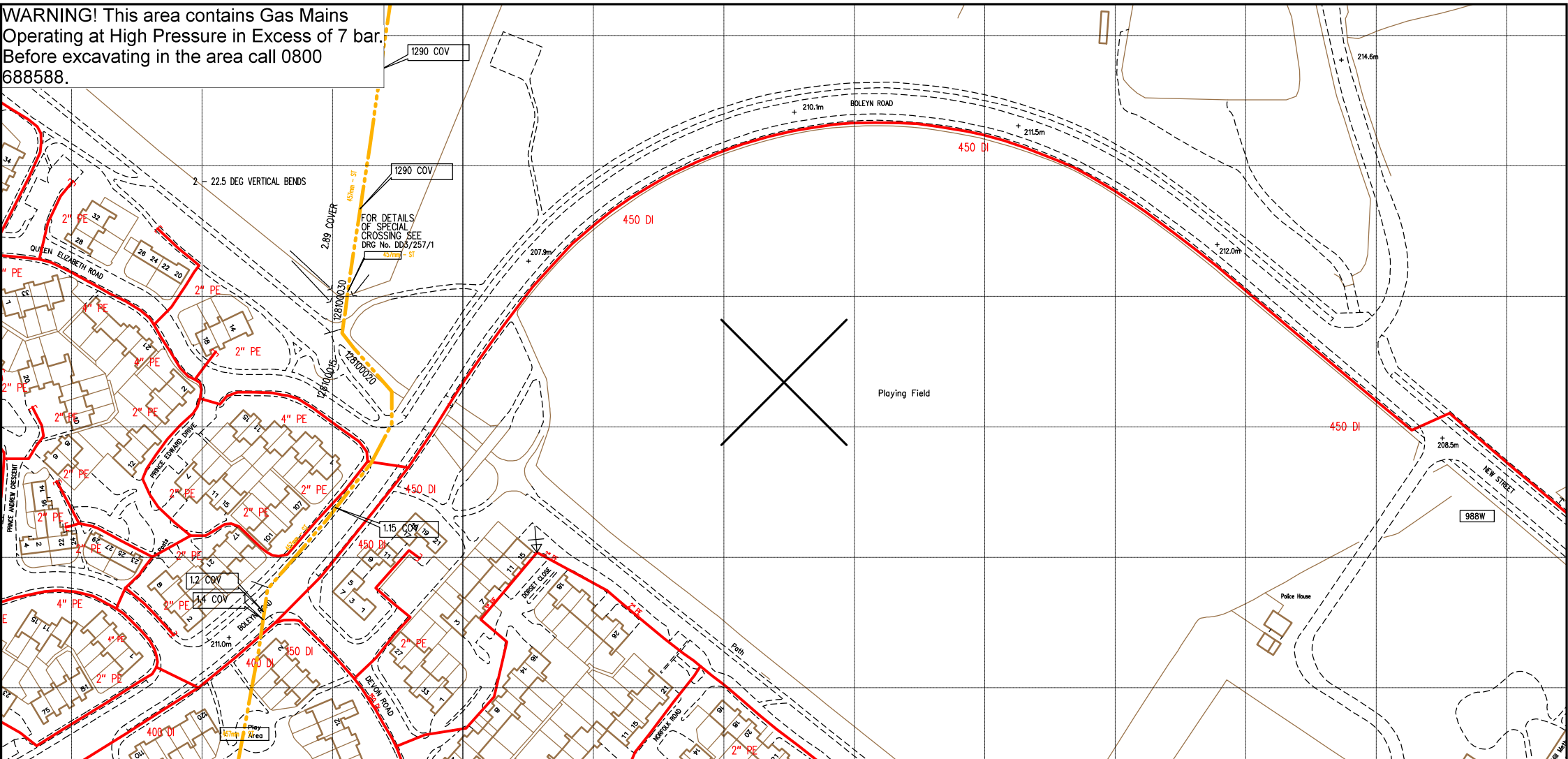


**WARNING! This area contains Gas Mains  
Operating at High Pressure in Excess of 7 bar.  
Before excavating in the area call 0800  
688588.**



SCALE: Not to scale	LP MAINS		<p>This plan shows those pipes owned by Cadent Gas Ltd in their role as a Licensed Gas Transporter (GT). Gas pipes owned by other GTs, or otherwise privately owned, may be present in this area. Information with regard to such pipes should be obtained from the relevant owners. The information shown on this plan is given without warranty, the accuracy thereof cannot be guaranteed. Service pipes, valves, syphons, stub connections, etc. are not shown but their presence should be anticipated. No liability of any kind whatsoever is accepted by Cadent Gas Ltd or their agents, servants or contractors for any error or omission. Safe digging practices, in accordance with HS(G)47, must be used to verify and establish the actual position of mains, pipes, services and other apparatus on site before any mechanical plant is used. It is your responsibility to ensure that this information is provided to all persons (either direct labour or contractors) working for you on or near gas apparatus. The information included on this plan should not be referred to beyond a period of 28 days from the date of issue. Further information on all DR4s can be determined by calling the DR4 hotline on 01455 892426 (9am-5pm) A DR4 is where a potential error has been identified within the asset record and a process is currently underway to investigate and resolve the error as appropriate.</p>	MAPS Viewer Version 5.8.0.1
USER ID: Charlie	MP MAINS			<p>Local Machine</p> <p>This plan is reproduced from or based on the OS map by Cadent Gas Ltd, with the sanction of the controller of HM Stationery Office. Crown Copyright Reserved.</p>
DATE: 27/07/2020	IP MAINS			
EXTRACT DATE: 10/06/2020	LHP MAINS			
MAP REF: SO9878				
CENTRE: 398623, 278667				
<p>Some examples of Plant Items:</p> <p>Valve  Depth of Cover  Syphon  Diameter Change  Material Change  Out of Standard Service </p>				